

Tear off this form and mail your donation to:

THE ARK Christian Ministries, 3522 N 1000 W 27, Converse, IN 46919

Phone (765) 395-3638 Fax (765) 395-3819 E-mail: [theark@thearkcm.org](mailto:theark@thearkcm.org) Web: [www.thearkcm.org](http://www.thearkcm.org)



Name \_\_\_\_\_

I am an Alumni. Please check: ☐ Camper ☐ Dean ☐ Faculty ☐ Employee ☐ Volunteer

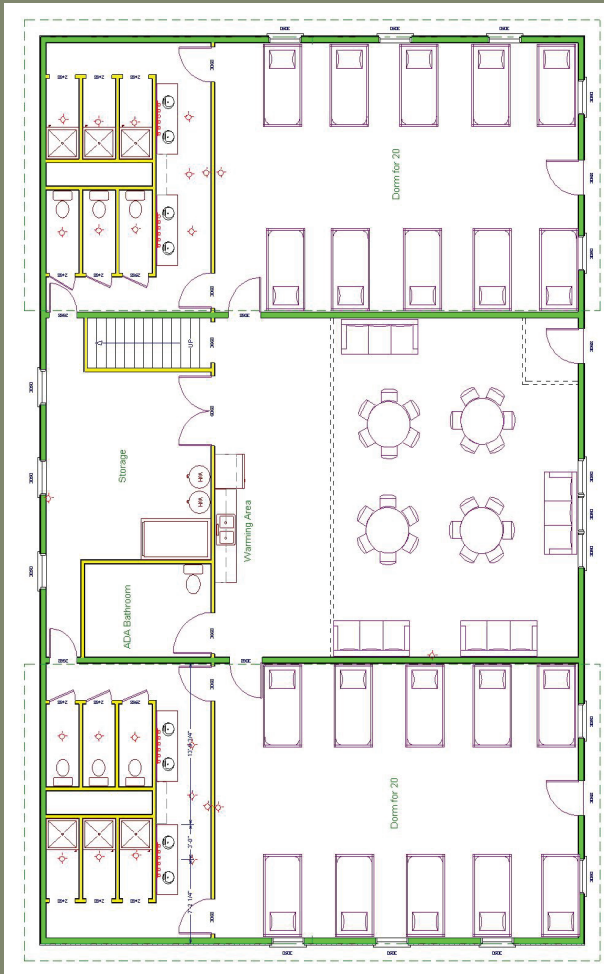
Address \_\_\_\_\_

City \_\_\_\_\_ State \_\_\_\_\_ Zip \_\_\_\_\_ Phone \_\_\_\_\_

E-mail \_\_\_\_\_ Church \_\_\_\_\_

- ☐ I want to join the Heroes of Faith by supporting THE ARK with a monthly gift of \$ \_\_\_\_\_
- ☐ I would like to give a gift toward the Lakeside Lodge of \$ \_\_\_\_\_
- ☐ Please add me to Bruce's Prayer Update E-mail.
- ☐ Please send information to set up regular giving through Electronic Fund Transfer.

THE ARK Christian Ministries is a 501(c)(3) charitable organization and as such all gifts are tax-deductible for personal or corporate tax purposes.



**Lakeside Lodge Floor Plan**  
Sleeps up to 40 with connected meeting space for use as summer cabin and retreat space year-round.



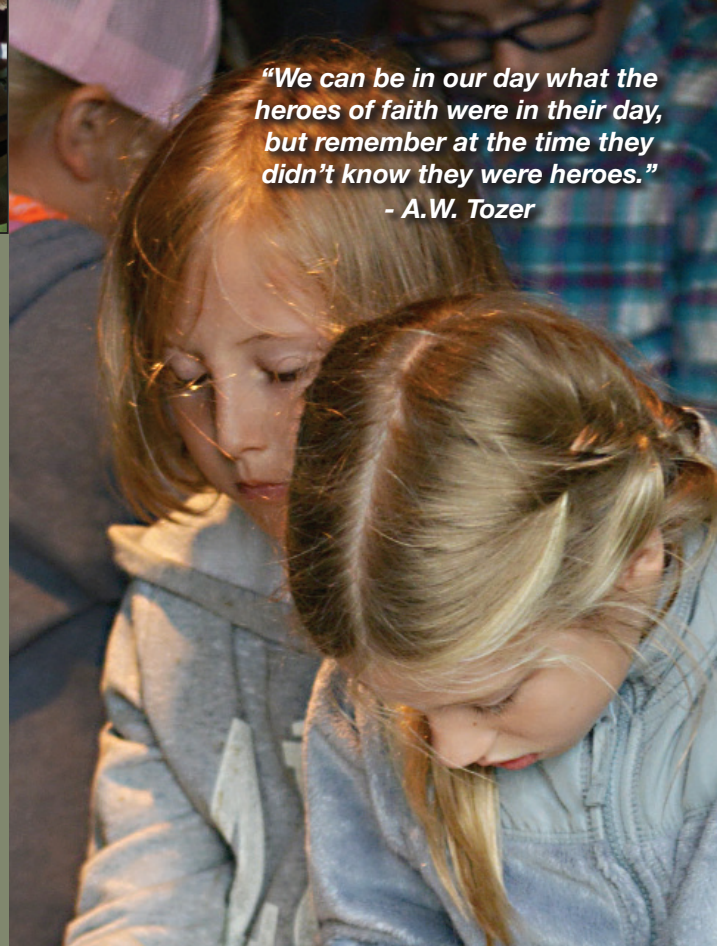
## Heroes of Faith



**THE ARK**  
Christian Ministries

3522 N. 1000 W. 27 • Converse, IN 46919  
Phone- 765-395-3638 • Fax- 765-395-3819  
[theark@thearkcm.org](mailto:theark@thearkcm.org)

*"We can be in our day what the heroes of faith were in their day, but remember at the time they didn't know they were heroes."*  
- A.W. Tozer

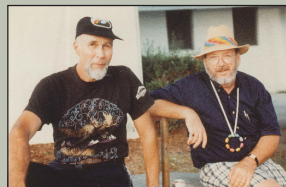


## HEROES OF FAITH - LIFE ON EARTH

- ♦ Rod Cameron (1933 – 2014)
- ♦ Jim Chaplin (1920 – 2005)
- ♦ Ed Crouch (1912 – 1992)
- ♦ John Leinbaugh (1935 – 2006)
- ♦ Larry Manning (1940 – 2013)
- ♦ Jim Snapp I (1938 – 2014)
- ♦ Dick Maple - (1922 - 1999)
- ♦ Bob Oswalt (1916 – 1990)
- ♦ Larry Sausaman (1948 – 2005)
- ♦ Russel Shrouff (1903 - 1997)



Cave Ground-breaking, August 1979



Rod Cameron  
& Jim Snapp I

## THE HEROES OF FAITH VISION

As we have grown from Pearson's Mill Christian Assembly, founded in 1948, to Rainbow Christian Camp, and now to THE ARK Christian Ministries, our core mission as a Bible-Based, Christ-Centered, and Mission-Minded ministry hasn't changed. But how we carry out that ministry has.

Today, THE ARK hosts over 1,200 people at 50 camp sessions each summer. We also host retreats and guest groups, work with local school groups, support missionaries, and mentor long-term interns.

Now, our goal is to honor the legacy of heroes who have gone before us--the many disciples who have made this place what it is. Each of these Christ-followers made a significant impact for the Kingdom through THE ARK. We will honor these heroes by turning the north hallway of the Conference Center into a Hall of Faith, featuring the photos and stories of these courageous people. We ask for your help to honor their legacy by helping us continue to build the Kingdom through THE ARK Christian Ministries.



## WHAT IS THE CHALLENGE?

Summer has been our primary time for ministry. The balanced school calendar has caused us to shift our priorities. To offer year-round programming, we need more winterized housing, additional year-round staff, and an expanded budget.

The Conference Center has been part of this solution, and provides the space we need for worship, gaming, and teaching. But we need additional sleeping space for hosting large overnight groups.

Year-round programming also calls for year-round staff, including personnel to run after-school programs, day groups, weekend retreats, and school break camps.



## WHAT IS THE SOLUTION?

The solution is threefold:

1. To offer year-round camping opportunities by increasing winterized sleeping space through a new Lakeside Lodge building.

2. To enhance the capacity of THE ARK'S staffing by increasing the internship program to 20 year-round interns by 2020.

3. To secure \$50,000 in committed monthly support, coming together to do what none of us could do alone and ensuring the future of THE ARK.



## HOW CAN YOU HELP?



To achieve these goals, THE ARK must raise \$50,000 in regular monthly support, plus an additional \$150,000 in one-time gifts in order to begin construction on the first Lakeside Lodge by Fall 2016. This can only happen through your partnership.

~Will you join us in prayer for the future of THE ARK Christian Ministries?

~Will you become a modern-day hero by investing in the future of THE ARK and the lives it will impact by making a special gift towards the construction of the new Lakeside Lodge?

~Will you join our list of Heroes of the Faith by committing to monthly support of this ministry?

Simply fill out the attached response card with your one-time gift and/or monthly support amounts, and join us as we pray for the success of this continued ministry.